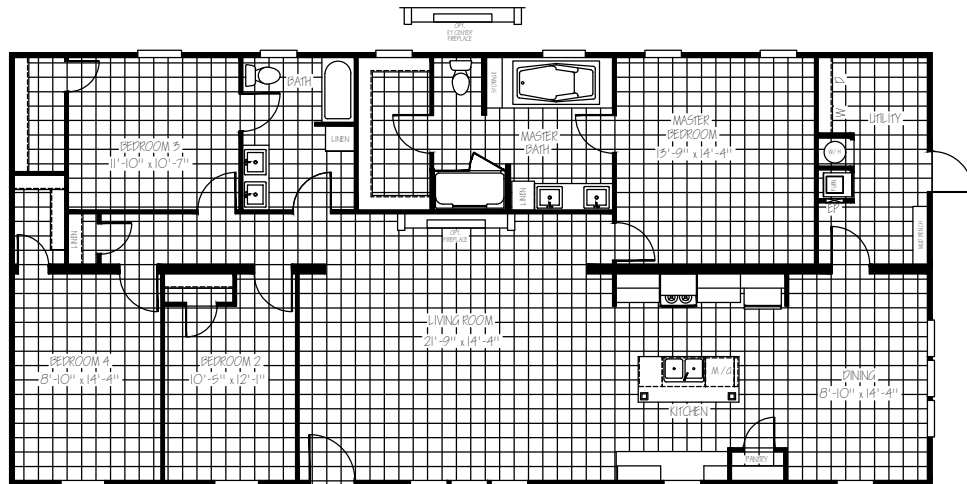




# TITANIUM

## PLAYER

TTM32644A | 32 x 64 | 1,920 sq. ft. | 4 Bed 2 Bath



### KITCHEN

- 42" Overhead Cabinet System
- 3/4" Hardwood Cabinet Doors
- Lined Overhead Cabinets
- Lined Center Shelf in Base Cabinets
- Brushed Nickel Lever Handles Interior Doors
- Stainless Steel Kitchen Sink - Farmhouse
- Spring Loaded Faucet

### BATHS

- Dual Ceramic Lavs in Master & Guest
- 54" Fiberglass Tub/Shower in Guest Bath
- Brushed Nickel Metal Faucets w/Lever Handles
- Elongated Toilets
- 60" FG Shower w/ Door in Master
- 72" Deck Tub with Cab Door Access to Plumbing

### INSULATION

- R-21 Blown Fiberglass Roof (*Formaldehyde Free*)
- R-11 Fiberglass Insulation in Walls (*Kraft Back*)
- R-11 Fiberglass Insulation in Floors
- Thermal Zone II

### APPLIANCES

- Stainless Steel Side by Side w/ Water & Ice
- Stainless Steel Smooth Top Range
- Stainless Steel Dishwasher
- Box Range Vent Hood
- 30 Gal. Dual Element High Efficiency Water Heater

### INTERIOR

- 8 Foot Flat Ceilings
- Programmable Thermostat
- Upgrade Lino Throughout
- 52" Brushed Nickel Ceiling Fan in Living Room
- Wire and Brace for Ceiling Fan Master Bedroom
- LED Flushed Mounted Ceiling Lights
- 2" Blinds Throughout
- Overhead Air

### EXTERIOR

- Low E Thermal Pane Windows
- Craftsman Style Front Door with Full View Storm
- Cottage Rear Door
- Vinyl Siding / Comp Roof
- Whole House Wrapped in OSB
- 5" Lineal Trim
- 16" on Center 2x8 Floor Joist
- Whole House Wrap / Vapor Barrier
- Smart Panel Insert with Metal Wainscot

### UTILITY

- Total Electric with 200 Amp Service
- Exterior Outlet Front Door Side
- Water Shut Offs at Toilets Only
- Whole House Water Shut-off
- Utility Door

### POPULAR OPTIONS

- A/C Disconnect
- 60" Jetcoat Shower
- Bedrock Package
- 50 Gallon Water Heater
- 100 AMP Electric Panel Box
- Gas Furnace
- Gas Range
- Smart Panel Siding with Trim Around All Windows
- Wind Zone 2
- Barnwood Doors
- Energy Star (33/13/22)
- Ceiling Beams
- Entertainment Center with Electric Fireplace
- Microwave over Range