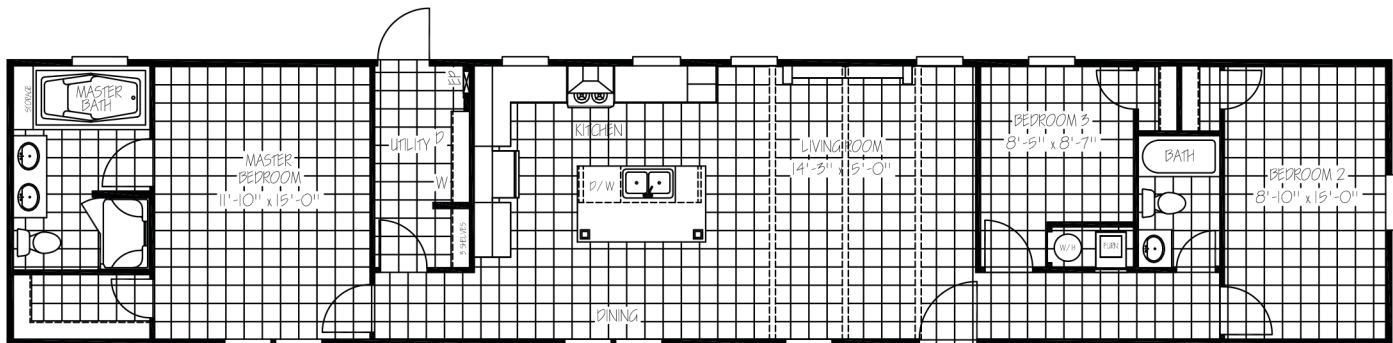




TITANIUM

PINEHURST

TTM16763D | 16 x 76 | 1,191 sq. ft. | 3 Bed 2 Bath



KITCHEN

- 42" Overhead Cabinet System
- 3/4" Hardwood Cabinet Doors
- Lined Overhead Cabinets
- Lined Center Shelf in Base Cabinets
- Brushed Nickel Lever Handles Interior Doors
- White Farmhouse Kitchen Sink
- Spring Loaded Faucet

BATHS

- 72" Deck Tub W/Cab Door Access to Plumbing
- 48" Fiberglass Shower with Glass Doors
- Dual Ceramic Lavs in Master
- 54" Fiberglass Tub/Shower in Guest Bath
- Brushed Nickel Metal Faucets w/Lever Handles
- Elongated Toilets
- Master Bath Mirror Trim

INSULATION

- R-21 Blown Fiberglass Roof (*Formaldehyde Free*)
- R-11 Fiberglass Insulation in Walls (*Kraft Back*)
- R-11 Fiberglass Insulation in Floors
- Thermal Zone II

APPLIANCES

- Stainless Steel Side by Side w/ Water & Ice
- Stainless Steel Smooth Top Range
- Stainless Steel Dishwasher
- Stainless Steel Vent-A-Hood
- 30 Gal. Dual Element High Efficiency Water Heater

INTERIOR

- 8 Foot Flat Ceilings
- Beamed Ceiling in Living Room
- Upgrade Lino Throughout
- 52" Brushed Nickel Ceiling Fan in Living Room
- Wire and Brace for Ceiling Fan Master Bedroom
- LED Flushed Mounted Ceiling Lights
- 2" Blinds Throughout Except Master Bath
- Living Room Entertainment Center

EXTERIOR

- Low E Thermal Pane Windows
- Craftsman Style Front Door with Full View Storm
- Cottage Rear Door
- Vinyl Siding / Comp Roof
- Whole House Wrapped in OSB
- 5" Lineal Trim
- 16" on Center 2x6 Floor Joist
- Whole House Wrap / Vapor Barrier

UTILITY

- Total Electric with 200 Amp Service
- Exterior Outlet Front Door Side
- Water Shut Offs at Toilets Only
- Whole House Water Shut-off
- Utility Door

POPULAR OPTIONS

- A/C Disconnect
- Tile Backsplash
- Rustic Package
- 50 Gallon Water Heater
- 100 AMP Electric Panel Box
- Electric Fireplace
- Gas Furnace
- Gas Range
- Smart Panel Siding with Trim
Around All Windows
- Wind Zone 2 & 3
- Overhead Air
- Barnwood Doors
- Stainless Steel Sink - Farmhouse
- Energy Star